



Forest Drive, Epping, CM16

BUTLER  STAG



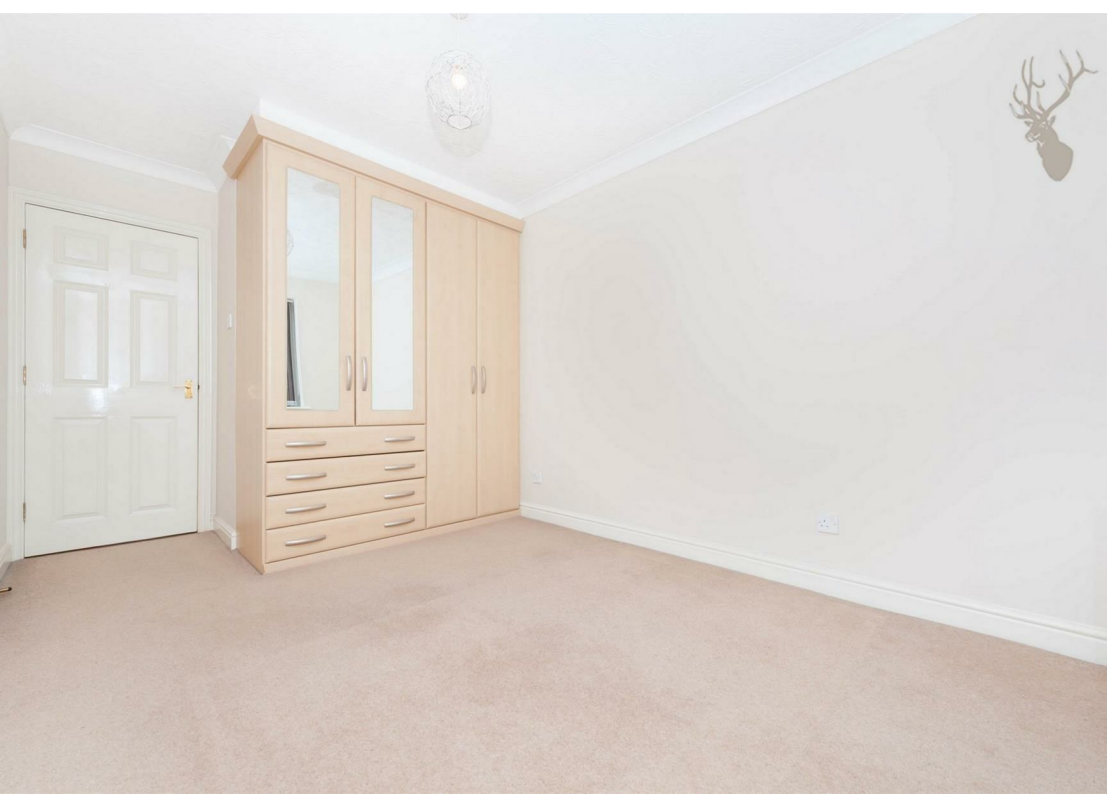
A three bedroom apartment situated of the ground floor of this secure modern development, in the heart of Theydon Bois village.

Having recently been decorated and newly carpeted the property is in immaculate condition and ready to be occupied. Perfectly located for the village shops, pubs and restaurants and just a moments walk to the central line underground station.



- Ground Floor
- Available Now/ Unfurnished
- Two Parking Spaces
- Three Bedrooms
- Newly Decorated & Carpeted
- Central Village Location

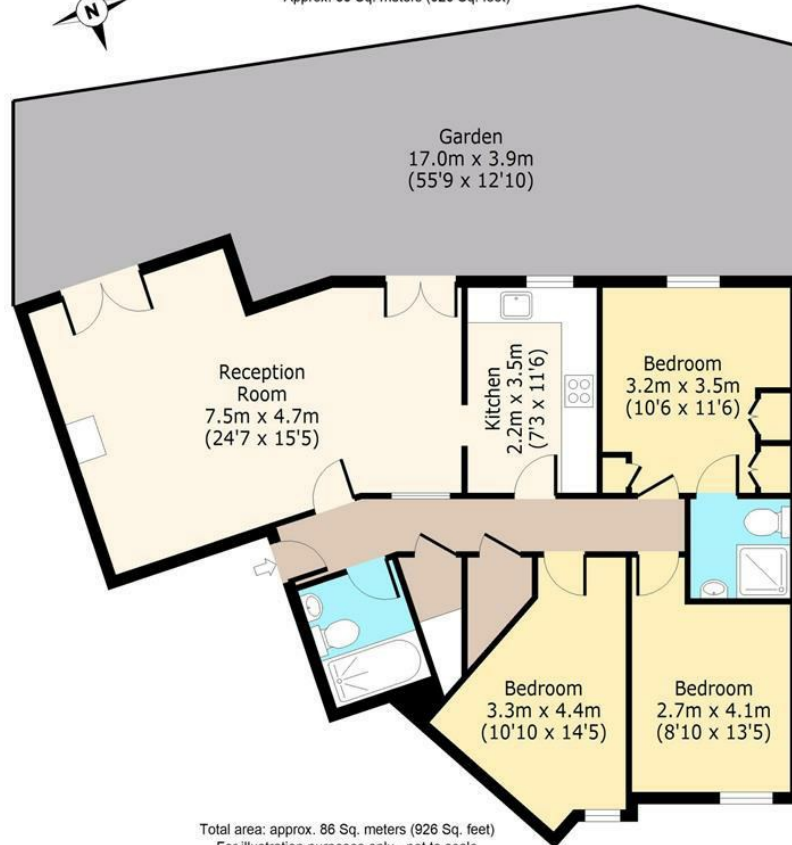




The Heights, CM16

Ground Floor

Approx. 86 Sq. meters (926 Sq. feet)



Total area: approx. 86 Sq. meters (926 Sq. feet)
For illustration purposes only - not to scale
www.londonpropertyassessments.co.uk

BUTLER & STAG

☎ 01992 667666

🏠 4 Forest Drive, Theydon Bois, Essex, CM16 7EY

✉ theydon@butlerandstag.com

www.butlerandstag.uk

IMPORTANT NOTICE - These particulars have been prepared in good faith and they are not intended to constitute part of an offer or contract. We have not performed a structural survey on this property and the services, appliances and specific fittings have not been tested. All photographs, measurements, floor plans and distances referred to are given as a guide and should not be relied upon.